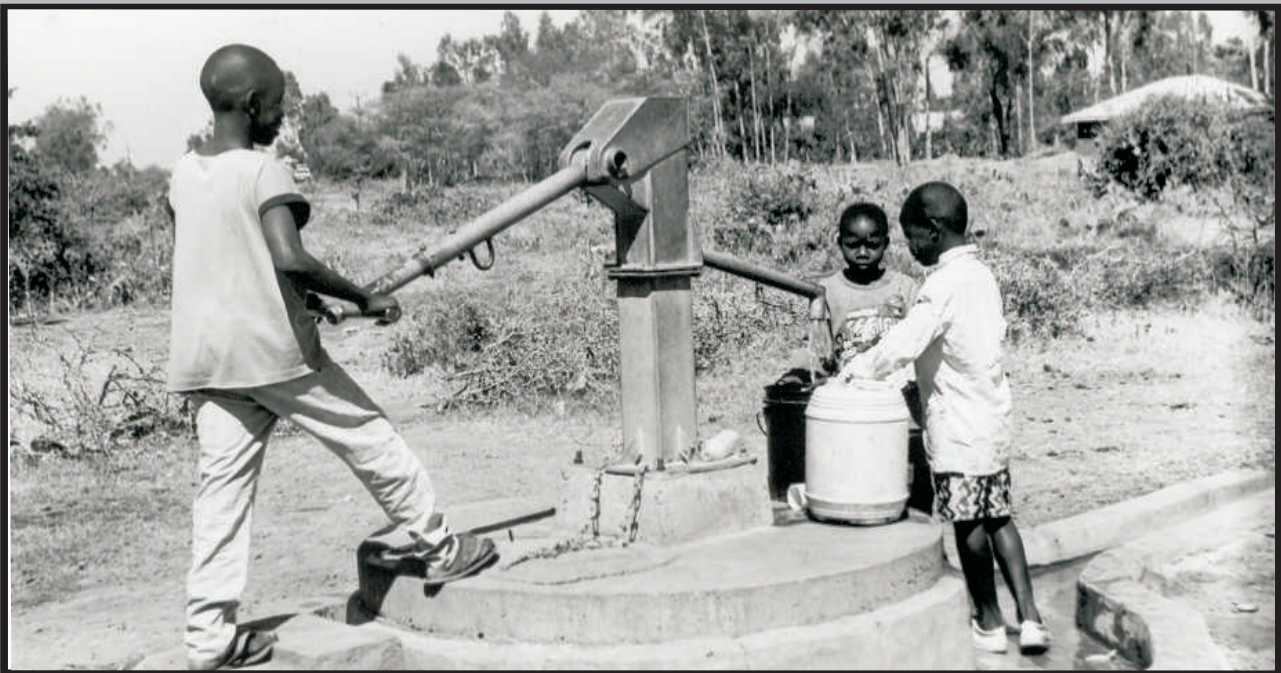


# DAYLIFF

## DATA SHEET

Hand  
Pumps

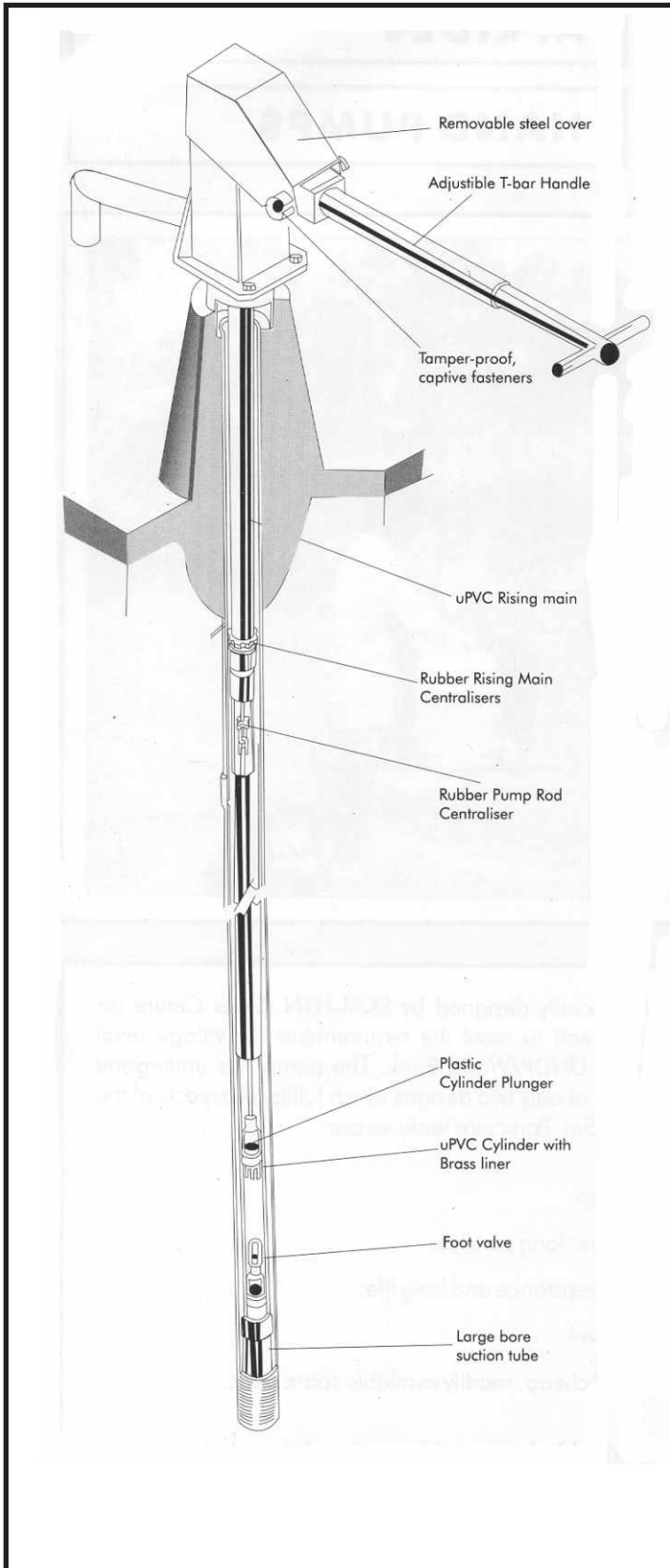
## AFRIDEV



The Afridev reciprocating type hand pump has been specially designed by SKAT-HTN (Swiss Centre for Development Cooperation in Technology and Management) to meet the requirements for Village Level Operation and Maintenance (VLOM) as specified by the UNDP/World Bank. The pump has undergone extensive laboratory and field development tests and is one of only two designs which fulfils all aspects of the UNDP/World Bank specification at depths between 0 and 45m. Particular features are:

- Up to 1300 litres/hour output at pumping lifts up to 45m.
- Heavy duty design suitable for continuous operation over long periods.
- Rugged all galvanised steel construction for corrosion resistance and long life.
- Simple to install, operate and maintain at the village level.
- Designed for ease of maintenance with basic tools and cheap, readily available spare parts.

Though the Afridev design is widely manufactured throughout the world, quality of the product itself is determined by that of the manufacturing process. The DAYLIFF Afridev is manufactured to exacting standards in a fully equipped ISO 9000:2000 certified factory with cumulative production experience of hundreds of thousands of units. The combination of this highest level of manufacturing quality, a tried and tested design and Davis & Shirliff's service commitment result in a rugged and dependable product ideal for all hand powered groundwater pumping applications



## SPECIFICATION

**Pump Head:** Fabricated throughout from mild steel hot dip galvanised for corrosion protection. Long life nylon bushes are provided for the handle fulcrum and rod hanger bearing.

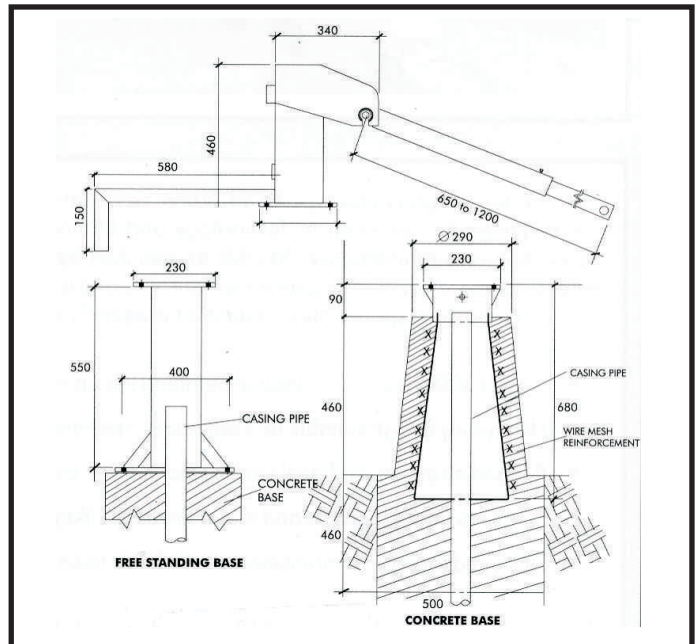
**Pump Stand:** Option of free standing or concrete encased fabricated galvanised pump stand.

**Cylinder:** 50mm diameter single acting PVC cylinder with brass liner, plastic plunger and plastic foot valve. Displacement per stroke is 0.44 litres.

**Rising Main:** 63mm O/D PVC rising main provided as standard in 3m lengths.

**Pump Rods:** Option of 10mm galvanized mild steel or stainless steel rods in standard lengths of 3m. Connection arrangement is by hook and eye with the option of cast or fabricated connectors.

## SPECIFICATION



NB. Contents herein are not warranted. The right is reserved to amend specifications without notice.

**BH2C-02/05**

AVAILABLE FROM

**D&S DAVIS & SHIRTLIFF**  
know H<sub>2</sub>O through experience  
[www.dayliff.com](http://www.dayliff.com)

**KENYA**  
**NAIROBI - HEAD OFFICE**  
TEL: (+254 20) 6968 000  
d&s@dayliff.com  
**NAIROBI - WESTLANDS**  
TEL: (+254 20) 4446011/6,  
westlands@dayliff.com  
**NAIROBI - DOWNTOWN**  
TEL: (+254 20) 340102  
d&s@dn.dayliff.com  
**NAIROBI - KAREN**  
TEL: (+254 20) 3883513  
karen@dayliff.com  
**THIKA**  
TEL: (+254 67) 20084/5  
thika@dayliff.com  
**ELDORET**  
TEL: (+254 53) 2061306  
eldoffice@dayliff.com

**NAKURU**  
TEL: (+254 51) 2213248  
d&s@nkr.dayliff.com  
**KISUMU**  
TEL: (+254 57) 2024763  
d&s@kisumu.dayliff.com  
**KISII**  
TEL: (+254 58) 30949  
d&s@kisii.dayliff.com  
**MERU**  
TEL: (+254 64) 31033  
meru@eld.dayliff.com  
**KENYA COAST**  
**MOMBASA**  
TEL: (+254 41) 2495920  
d&s@msa.dayliff.com  
**MALINDI**  
TEL: (+254 42) 210425  
d&s@mid.dayliff.com

**DIANI**  
TEL: (254 40) 3202181  
d&s@diani.dayliff.com  
**LAMU**  
TEL: (+254 20) 2651052/56  
d&s@lamu.dayliff.com  
**NYALI**  
TEL: (+254 20) 2443357  
d&s@nyali.dayliff.com  
**ETHIOPIA**  
**ADDIS ABABA**  
TEL: (+251 11) 5159341/44  
d&s@et.dayliff.com  
**RWANDA**  
**KIGALI**  
TEL: (+250) 504039, FAX: 504033  
sales@dayliff.com.rw

**UGANDA**  
**KAMPALA**  
TEL: (+256 414) 346337/8  
d&s@ug.dayliff.com  
**KAMPALA - NAKESERO**  
TEL: (+256 392) 734633  
d&s@ug.dayliff.com  
**GULU**  
TEL: (+256 471) 433041  
d&s@ug.dayliff.com  
**MBARARA**  
TEL: (+256) 0753 940 080  
d&s@mbr.dayliff.com

**TANZANIA**  
**DAR ES SALAAM**  
TEL: (+255 22) 2112515/6  
office@td.dayliff.com  
**DAR ES SALAAM - KARIAKOO**  
TEL: (+255 22) 2184867  
office@krk.tzdayliff.com  
**ARUSHA**  
TEL: (+255 27) 2502517/8  
office@sars.tzdayliff.com  
**ZANZIBAR**  
TEL: (+255 24) 2234660/1  
Office@znz.tzdayliff.com  
**MWANZA**  
TEL: (+255 28) 2541971/2  
office@mwz.tzdayliff.com

**ZAMBIA**  
**LUSAKA**  
TEL: (+260 211) 288010/1, 845010/1  
lusaka@zm.dayliff.com  
**KITWE**  
TEL: (+260 212) 221747/67  
kitwe@zm.dayliff.com  
**NDOLA**  
TEL: (+260 212) 610936/7  
ndola@zm.dayliff.com  
**LIVINGSTONE**  
TEL: (+260 213) 320002  
livingstone@zm.dayliff.com  
**SOUTH SUDAN**  
**JUBA**  
TEL: (+211 956) 397 070  
sudan@zm.dayliff.com